

# WELCOME TO THE

Issued: 14.10.2019



# SV BOOSTEDT WINTER OPEN 2019

# WELCOME

## **SV Boostedt Winter Open Championships 2019**

We are looking forward to a Fun Disc Golf Tournament with you in Boostedt! We want to celebrate with you the establishment of our parcours and of our Disc Golf division within the Sports Club Boostedt in 2019. Thus, here is our first tournament in the heart of Schleswig-Holstein! As it is our first tournament, be patient with us ;-)! We just want to play with you some Disc Golf and have a lot of fun! The winner of each division receives a DiscGolfStore Voucher. Each player receives a Mini-Marker.

Don't hesitate, register in [discgolfmetrix](#) or send us a registration email and help us to make this little tournament to a small success.

**Yours "Bootown"- Disc Golfers**

# SV BOOSTEDT WINTER OPEN 2019

THANK YOU



DiscGolf  
**Store.de**

FOR YOUR  
SUPPORT

# OVERVIEW

**Date:** 30.11.2019  
**Format:** 2 x 18 holes for all

**The Winner of each division receives a DiscGolfStore  
Voucher a 15 Euro**

**Each Player receives a  
DiscGolfStore Mini-Marker**

**Classified:** Fun Tournament  
**Divisions:** MPO, FPO, MP40+, Juniors<=18  
**Players:** 36  
**TD:** Kai Christophersen  
**Organizer:** SV Boostedt v. 1922 e.V.  
**Entry fee:** 7 Euro (Juniors: 5 Euro)  
**Soup lunch:** can be pre-ordered  
additional 7 Euro per person

Locker rooms, restrooms, showers and restauration are directly on the sport park area. The entry fee is used to pay for our expenses, donate five Disc Golf discs to the „Boostedter Jugendtreff“ and grow the disc golf sport!

**SV BOOSTEDT  
WINTER OPEN 2019**



# TIME TABLE

**08:00 Registration opens**

08:30 Playersmeeting &  
Score card pick up

**09:00 Tee-off 1. round (shot-gun)**

12:00 Lunch &  
Score card pick-up

**13:00 Tee-off 2. round (shot-gun)**

**16:30 Award ceremony**

**Get-together in Sportler Treff open end!**

**SV BOOSTEDT  
WINTER OPEN 2019**

# FOOD

## Saturday morning

Breakfast available 2 minutes from the sports park area at

Baker “Bäckerei Tackmann”

EDEKA Grümmer

Aldi Boostedt

Open: 7:00 to 20:00

GPS 54.013233, 10.015360

## Saturday lunch

Soup lunch will be served in Sportler Treff on the sports park area in time and needs to be pre-ordered while registration process. Hot & cold Drinks will be available for purchase at Sportler Treff on the sport park area. Otherwise, baker “Bäckerei Tackmann”, EDEKA and Aldi are nearby.

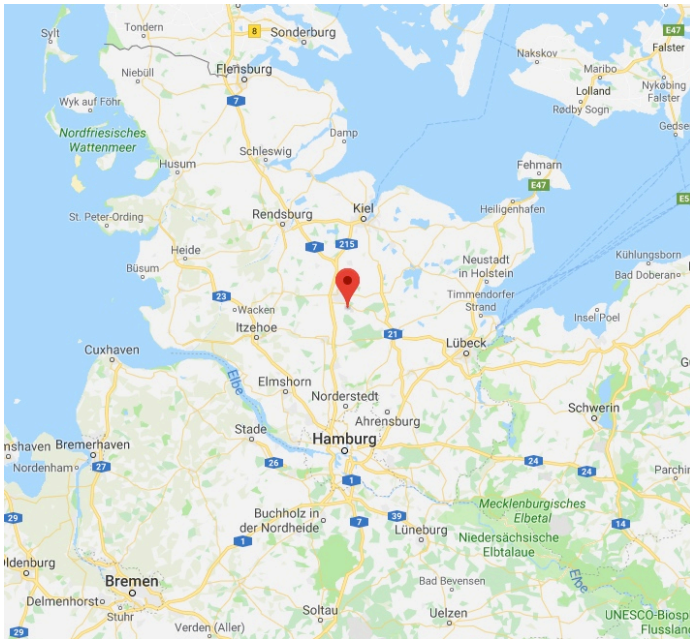
SV BOOSTEDT  
WINTER OPEN 2019

# GETTING TO US

Once you have reached Boostedt, head towards the center. The SV Boostedt sport park area is directly at the beginning of the town. We have a parking area, don't worry!

Address:            Bahnhofstraße 56  
                         24598 Boostedt

GPS:                54.015005, 10.021061



# SV BOOSTEDT WINTER OPEN 2019

# LODGING

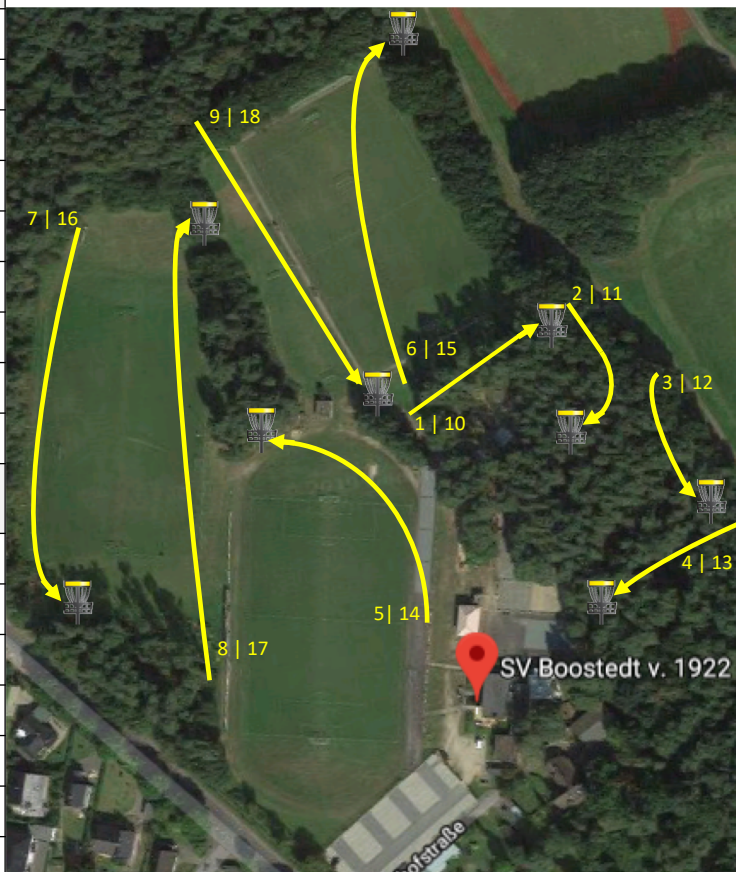
In Neumünster, near to Boostedt, there is a youth hostel, some hotels and perhaps you also find a bed & breakfast or airbnb-place to stay. If you would like to camp somewhere, please contact us. Perhaps, we find a place for you. But don't forget ;-) it might be cold and windy in november.

However, you should be able to find something to your liking, if needed.

SV BOOSTEDT  
WINTER OPEN 2019

# Course Overview

Hole	[m]	Par
1	78	3
2	74	3
3	54	3
4	57	3
5	113	3
6	152	3
7	150	3
8	195	4
9	129	3
<b>Σ1-9</b>	<b>1002</b>	<b>28</b>
10	78	3
11	74	3
12	54	3
13	57	3
14	113	3
15	152	3
16	150	3
17	195	4
18	129	3
<b>Σ10-18</b>	<b>1002</b>	<b>28</b>
<b>Σ1-18</b>	<b>2.004</b>	<b>56</b>

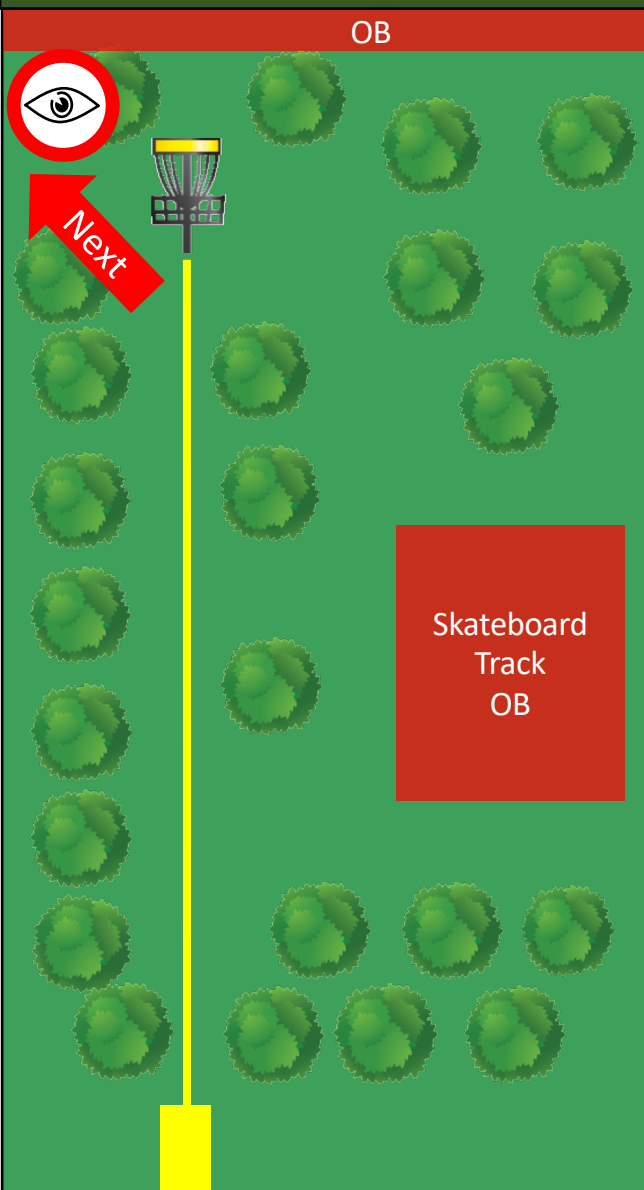


The permanent holes 1 – 4 and 9 are open everyday, just watch out for soccer players. The temporary holes 5,6,7 and 8 are open in the early morning of 30.11.2019. We try to arrange the temporary holes from time to time on Saturdays between 10-12 in the morning, please contact us.

# SV BOOSTEDT

# WINTER OPEN 2019

# Hole 1 | 10 Par 3 78 m



Skateboard track and fairway hole 2 behind the basket are OB.

Uphill basket almost blind – spotter required! Hole 2 runs behind the basket!

Find the Gap!

## SV BOOSTEDT WINTER OPEN 2019

# Hole 2 | 11 Par 3 74 m



The first mando tree (yellow) must be passed on the left side. If you fail at the first mando tree, you have to retee. The second mando tree must be passed on the right side. If you fail the second mando tree, go to Drop Zone.

Beware of the  
landing area around  
Hole 1 | 10!

The fence to the left  
and beyond is OB.

# SV BOOSTEDT WINTER OPEN 2019

# Hole 3 | 12 Par 3 54 m



Downhill basket almost blind – spotter required as fairway 4 | 13 is crossing!

The fence to the left and beyond is OB.

## SV BOOSTEDT WINTER OPEN 2019



# Hole 4 | 13 Par 3 57 m



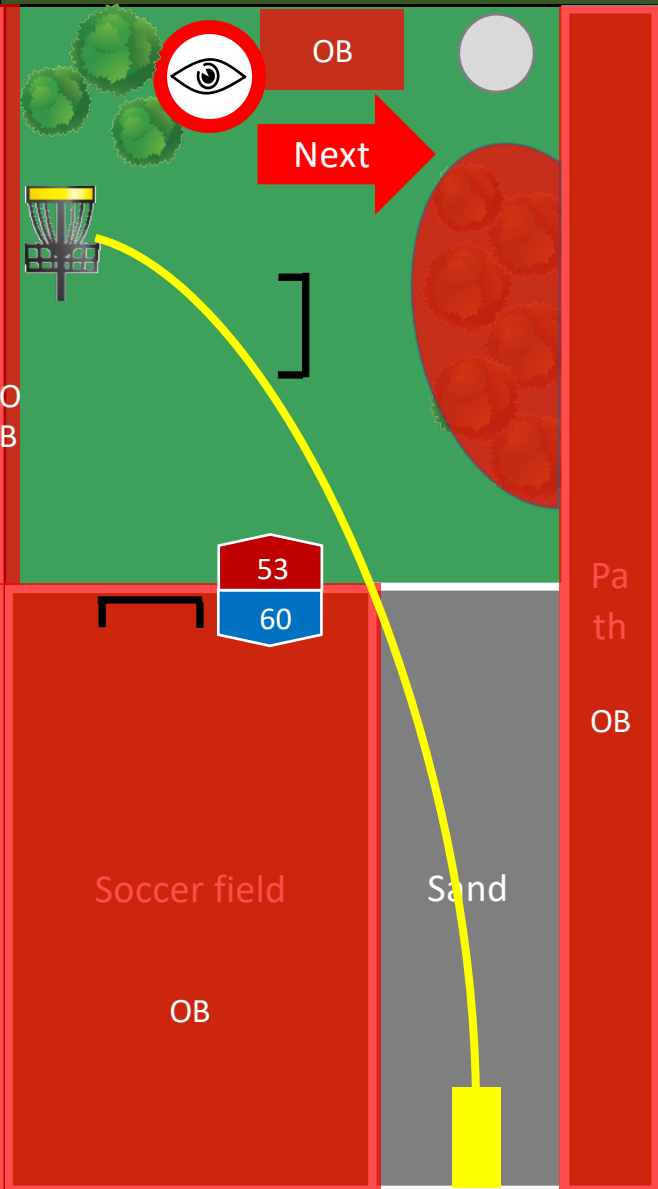
Mando (yellow arrow):  
The first mando tree  
must be passed on the  
left side. If you fail at  
the first mando tree,  
you have to retee.

Downhill basket,  
spotter required.

The fence to the left  
and beyond is OB.

## SV BOOSTEDT WINTER OPEN 2019

# Hole 5 | 14 Par 3 113 m



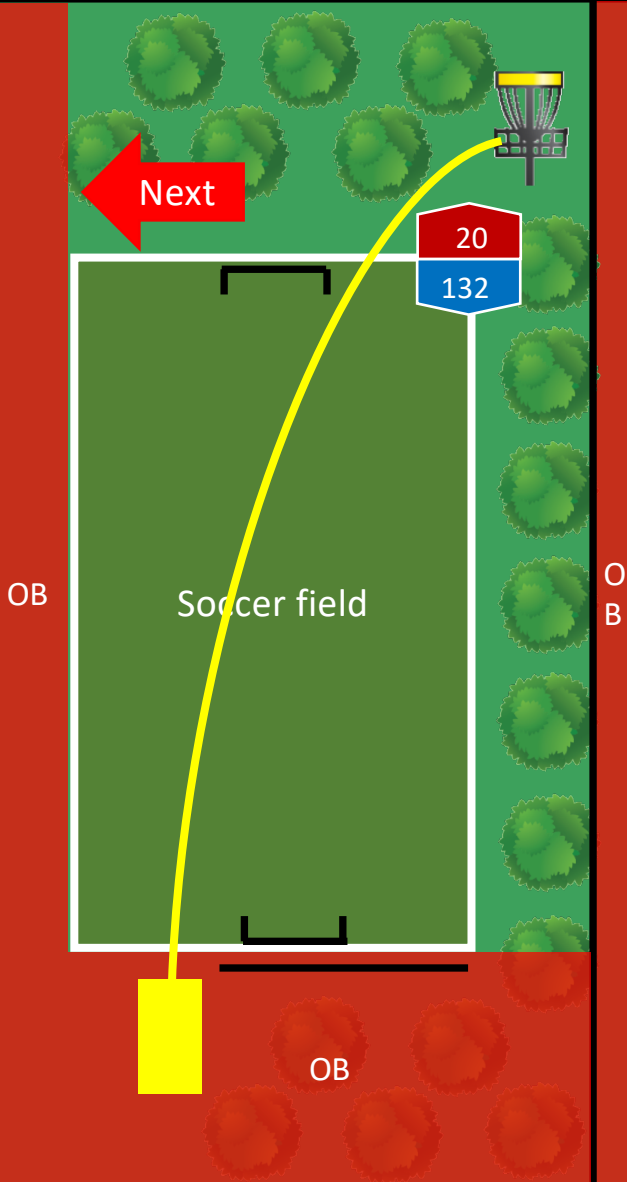
Soccer field on the left and fairway of 8|17 on the far left, roof of the small house, the path on the right beyond the railing and beyond are OB.

Soccer goals with net  
are natural obstacles.

Watch out while walking to hole 6|15!

# SV BOOSTEDT WINTER OPEN 2019

# Hole 6|15 Par 3 152 m



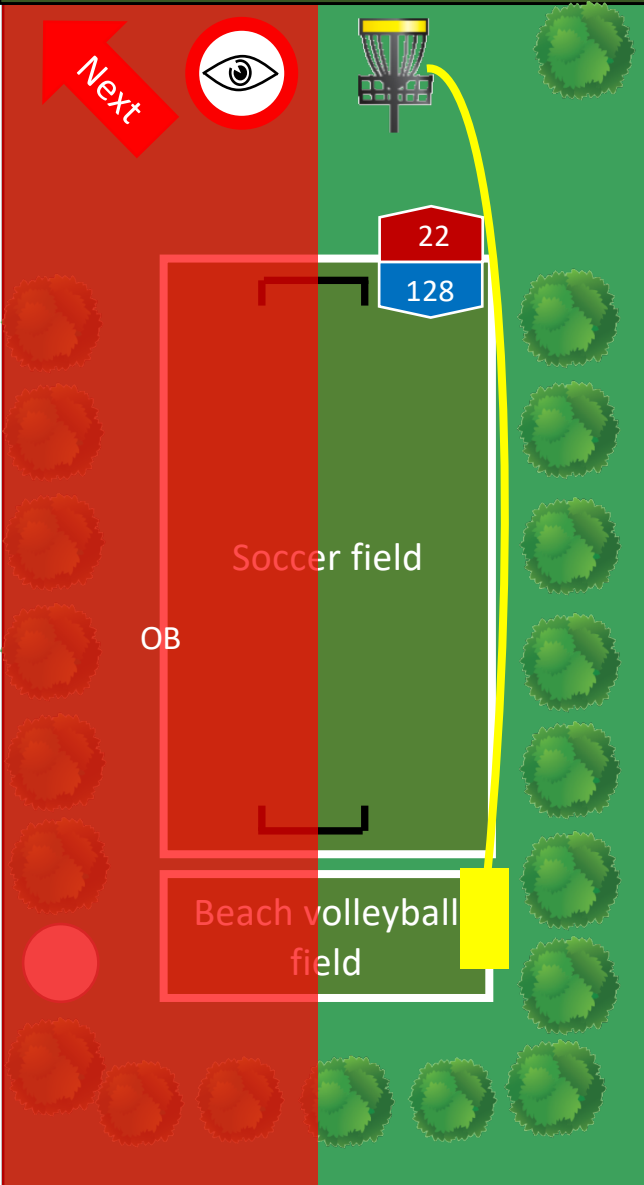
Uphill basket blind – spotter required!

The fairway of hole 9|18 and beyond and the path left of the tee and beyond is OB. The area in front of the tee is OB until the soccer field starts.

The fence to the far right behind the trees and beyond is OB.

## SV BOOSTEDT WINTER OPEN 2019

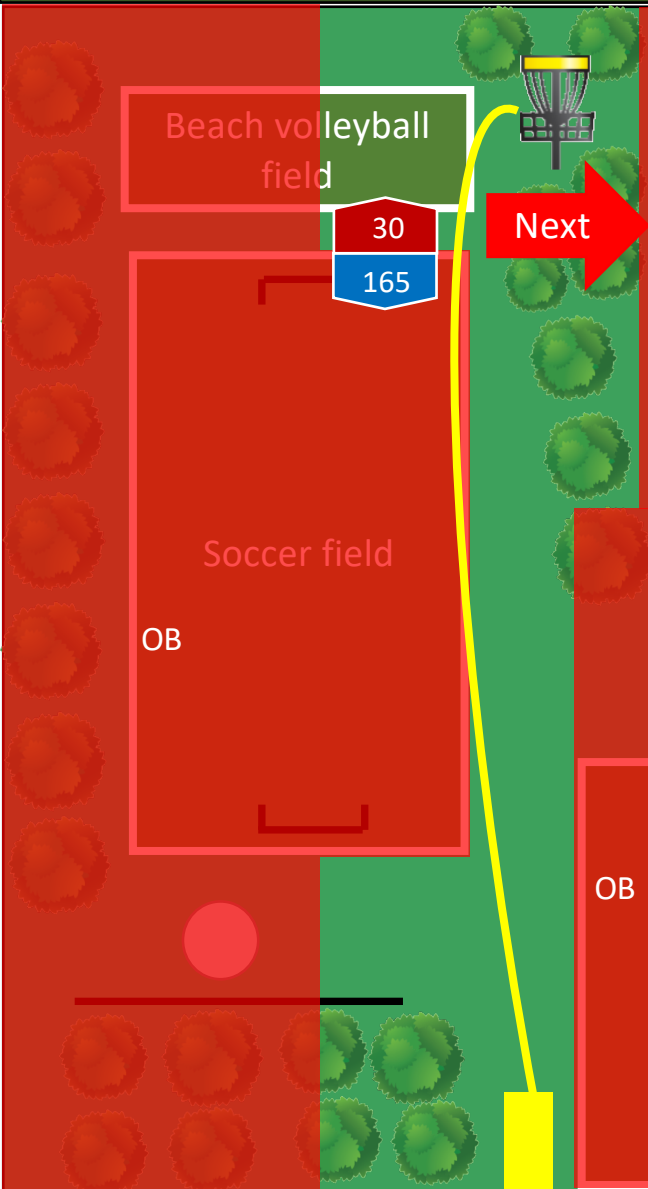
# Hole 7 | 16 Par 3 150 m



The area left of the middle of the soccer field and beyond is OB.

## SV BOOSTEDT WINTER OPEN 2019

# Hole 8|17 Par 4 195 m

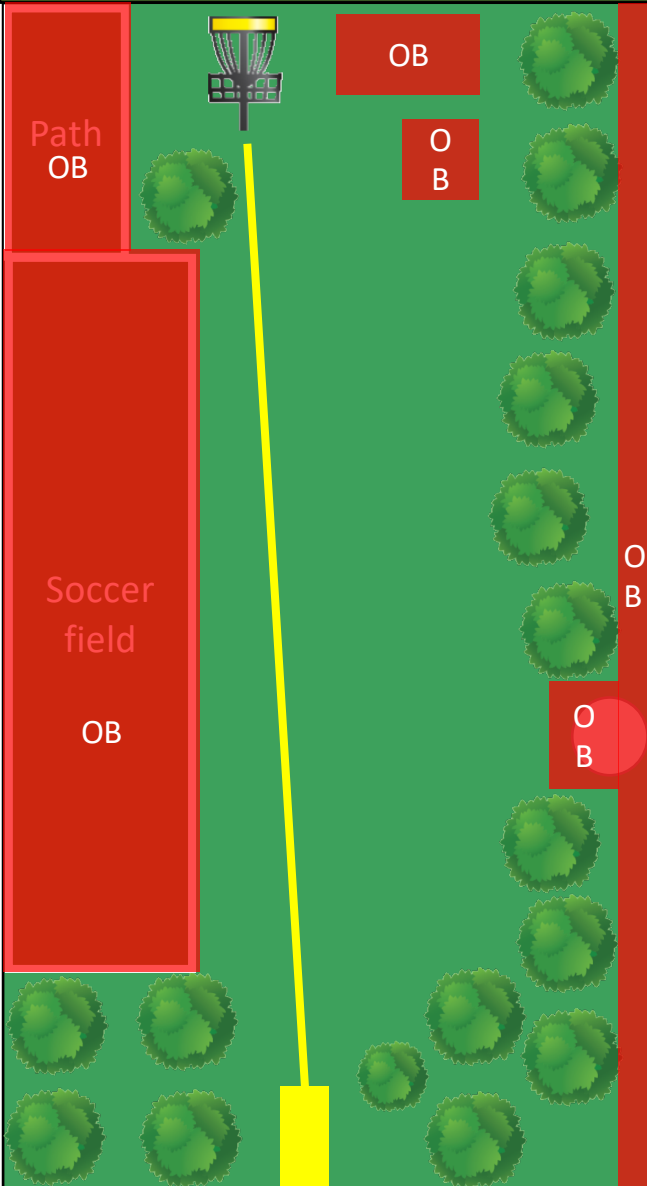


The area left of the middle of the soccer field on the left and beyond is OB. The soccer field itself on the left and beyond is OB.

The area behind the railing on the right and beyond is OB as well as the fairways of hole 5|14 and 9|18.

## SV BOOSTEDT WINTER OPEN 2019

# Hole 9 | 18 Par 3 129 m



## “Top of the World”

The soccer field on the left and beyond, the open field behind the woods on the right (fairway hole 8|17) and beyond and Circle 1 of hole 8|17 and beyond are OB. The path on the left of the basket and beyond is OB. The roofs of the small houses are OB.

# SV BOOSTEDT WINTER OPEN 2019

# Contact Details

Organizer:

SV Boostedt v. 1922 e.V.

Bahnhofstraße 56

24598 Boostedt

1. Chairman: Peter Blumenröther

Tournament Director:

Kai Christophersen

[kch@discgolfkueste.de](mailto:kch@discgolfkueste.de)

**SV BOOSTEDT  
WINTER OPEN 2019**